



EACH ONE TEACH ONE

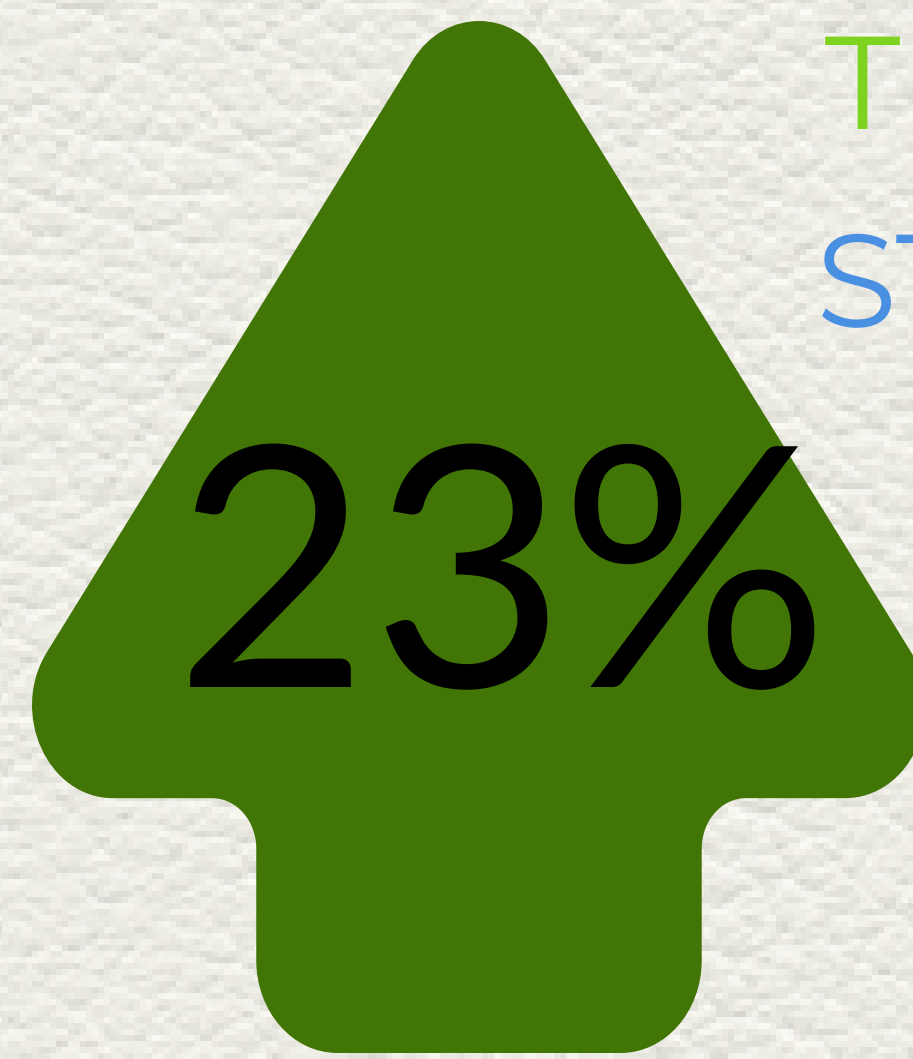
# 2018 IMPACT REPORT

The mission of the Rowan County Literacy Council is to provide literacy instruction to individuals regardless of means or ability to pay, to improve the quality of life for individuals and to advocate for literacy awareness.

As we look back on the highlights of 2018 in our annual report, it's easy to see the past year was not only busy, but was filled with many great accomplishments. From expanding our Elementary Literacy program to beginning an Evening ESL group class, these accomplishments wouldn't have happened without the ongoing support of our tutors, donors, funders and community partners. Thanks for helping us make 2018 such a success.

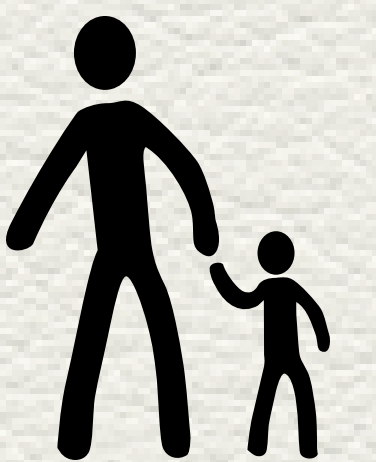
We couldn't do it without you!

**5** BIG THINGS  
**YOU**  
HELPED US ACHIEVE  
IN 2018



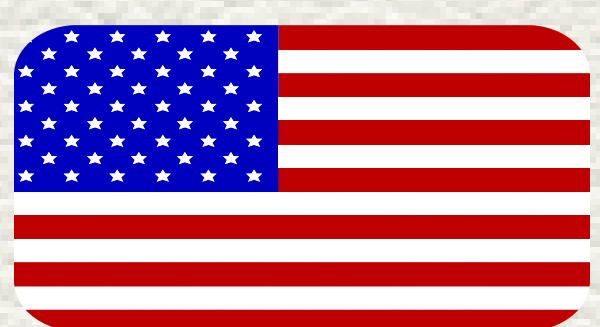
THE NUMBER OF  
STUDENTS SERVED  
IN 2018  
VS  
IN 2017

ELEMENTARY LITERACY STUDENTS  
AVERAGED  
A GAIN OF **2.5**  
READING LEVELS



**3**

ESL STUDENTS OBTAINED  
CITIZENSHIP

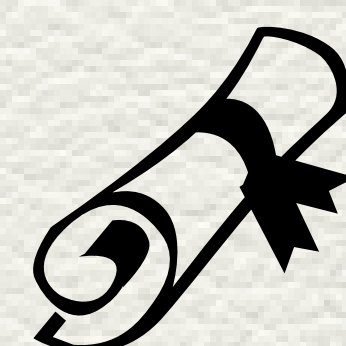


**56**

ADULT STUDENTS  
MET  
OR EXCEEDED  
THEIR GOALS



STUDENTS  
PASSED  
THE GED

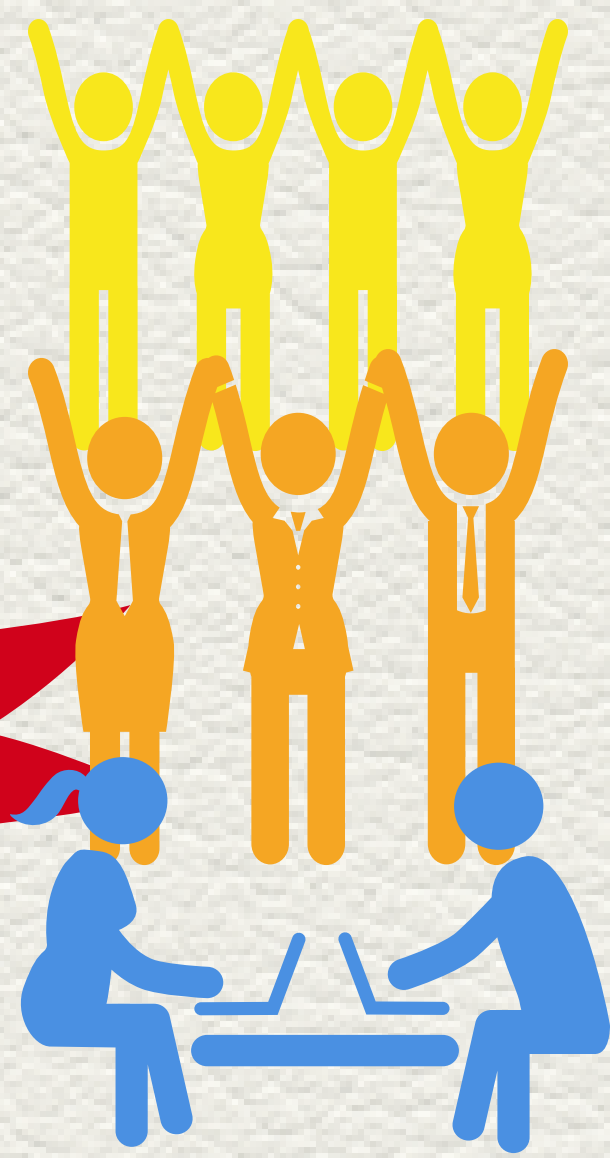


**2**





# 2018 ANNUAL HIGHLIGHTS



OUR PROGRAMS ENGAGED

# 218

ADULTS & CHILDREN:

▲ 15%

of Adult Basic Ed students who increased by 3 grade levels

▲ 17%

of English-as-a-Second language students who increased by 3 grade levels

▲ 13%

of Elementary Literacy students who are proficient and fully on grade level

We didn't do it alone, though...

56

TUTORS

= \$99,994.50

of In-Kind Support

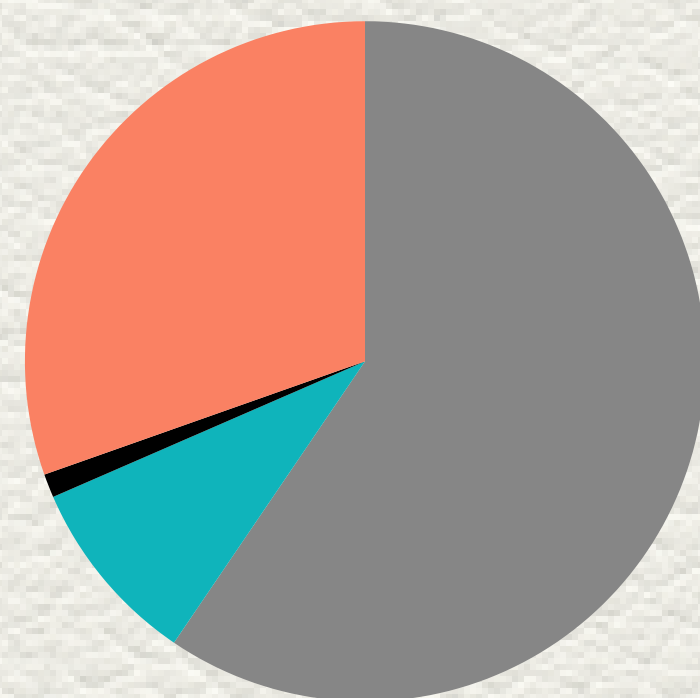
CONTRIBUTED MORE THAN

4,050

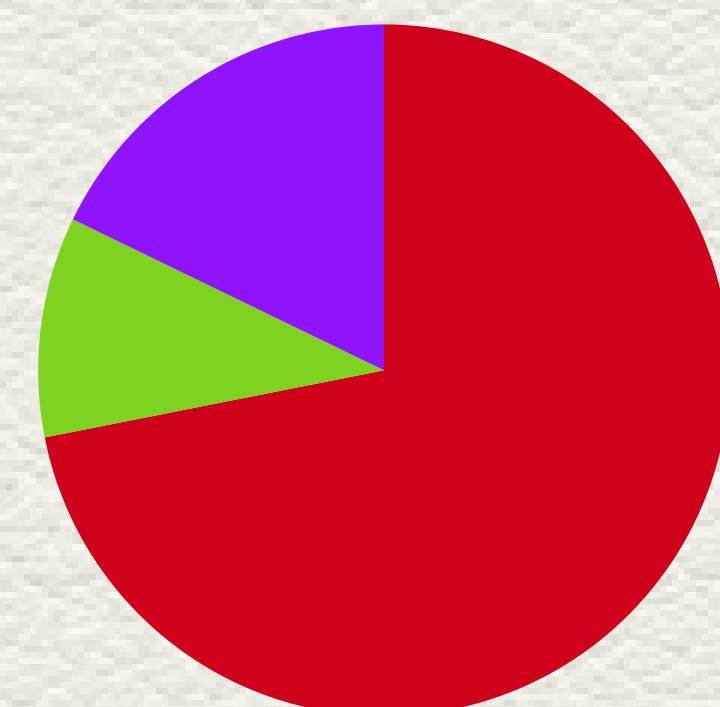
HOURS OF SUPPORT

**G**  
**R**  
**A**  
**N**  
**T**  
**FUNDERS**

REVENUES \*Complete audited financial statements can be found on our website FINANCES

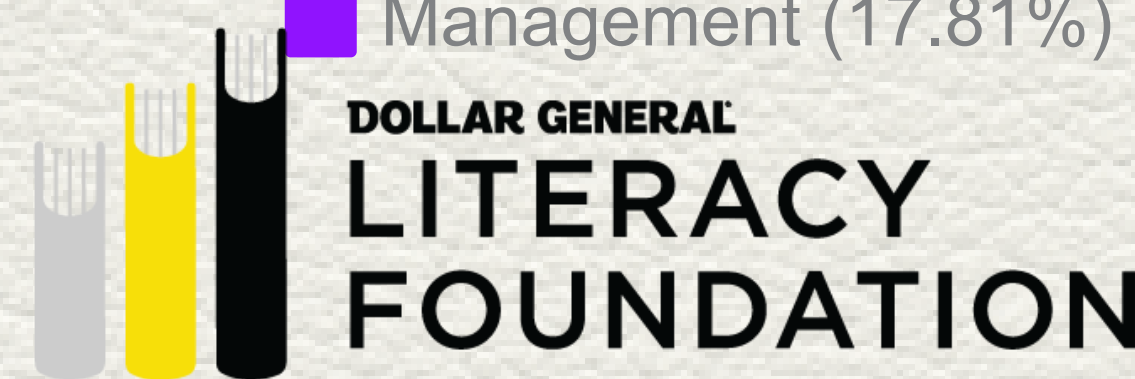
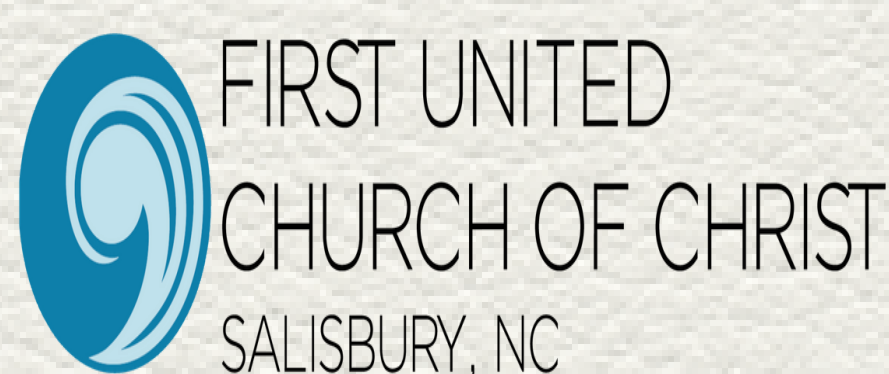


■ Grants (59.49%) ■ Fundraisers (8.98%)  
■ Interest (1.12%) ■ Donations (30.40%)



■ Programs (71.89%) ■ Fundraising (10.30%)  
■ Management (17.81%)

Salisbury Community Foundation



Board

2018

of Directors

Chair Melody Moxley  
Vice Chair Helen Peacock  
Treasurer Vance Meek  
Don Doering  
Kelly Freeze

Nan Lund  
Scott Maddox  
Gary Rash  
Wen Ye

Your continued support is important

To continue offering important programs and services, we need your support! Whether it's a monthly financial gift, a bequest, or a gift of time through volunteerism- it's all vitally important to our success.

To find out how you can make a lasting impact, visit [www.rcliteracy.org](http://www.rcliteracy.org)